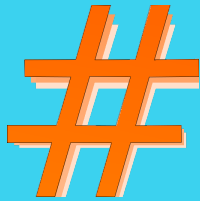


Top 5 Tips

In IDEA Discipline

1



Count All Disciplinary Removals

Keep counting through the end of the school year, and start over the next year. Count partial days too!

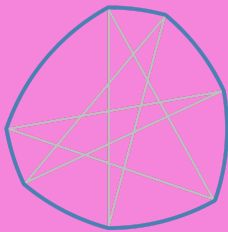
2



Provide FAPE After 10 Days

Any time a student is removed for more than 10 school days, the school **MUST** provide FAPE. If a disciplinary removal is **NOT** a change in placement, the school decides what services are needed. After a change in placement, the IEP team decides what services are needed.

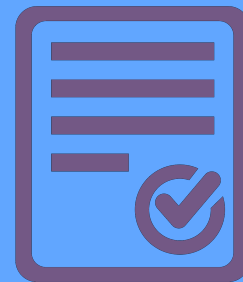
3



Look for Patterns

Understanding whether a disciplinary removal is a *de facto* change in placement requiring analyzing patterns of behavior.

4



Don't Forget PWN or PS

You must provide parents Prior Written Notice **AND** Procedural Safeguards on the date the decision is made to make a removal that constitutes a change of placement.

5



Manifestation Determination

Within 10 school days of ANY decision to make a removal that constitutes a change in placement, the school must conduct a manifestation determination.

Lessons 5 Learned

In IDEA Discipline

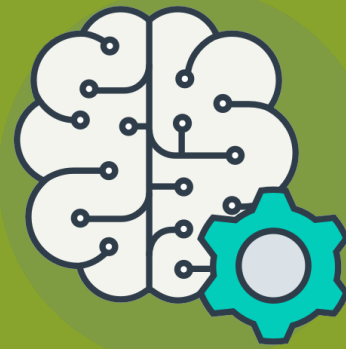
1



Disciplinary Removals

Count all disciplinary removals for a violation of a code of conduct, school rules, or classroom rules. Not counting all removals will lead to a denial of FAPE!

2



Do Not Disconnect from Learning

Discipline should NOT be used to disconnect students with disabilities from the general curriculum, learning opportunities, or specially designed instruction. The highest need students need more support, NOT LESS!

3



Escalating Behavior

When a student's behavior escalates, it may be time to recalibrate the IEP rather than rely on disciplinary removals. Have the student's educational needs changed?

4



No Shortened School Day

It is impossible to serve the highest need students with less time. Be clear that shortened school days rarely teach students new skills needed to return to school.

5



Home Is Not the Only IAES

Look at where the student will have an opportunity to continue to participate in the general curriculum AND progress toward meeting IEP goals. Home can't be the only option.