

Speech Language Pathologists



Refining Implementation of IDEA

LENORE KNUDTSON, PINGORA CONSULTING, LLC

WAVES
2021



Speech Language Pathologists



Refining Implementation of IDEA

LENORE KNUDTSON, PINGORA CONSULTING, LLC

WAVES
2021

LENORE KNUDTSON

Thank you for this opportunity.



Be a life-long learner.

It is the responsibility of every education professional to think deeply, sharpen the skill set, learn new things, and improve outcomes on behalf of students.

- ✓ Lean in!
- ✓ Challenge yourself!



TODAY'S TOPICS



Teamwork

- Team sharing
- Accountability
- Better decisions
- Less blame
- Better outcomes



Aligning Services & Needs

- Based on needs
- Period
- End of story



Provide Services

- Consistent w/ IEP
- No freestyling
- Period



Educational Benefit

- FAPE
- Progress
- Behavior too
- Reasonable
- Meaningful



Will you know it when you see it?

- The IEP
- Stagnate Progress
- Unexpected Progress



First, some context. . .

PERCENT OF STUDENTS IDENTIFIED AS SPEECH/LANGUAGE

	Wyoming Ages 3-5	National Ages 3-5
2018-2019	73.2%	41.4%
2019-2020	66.4%	38%

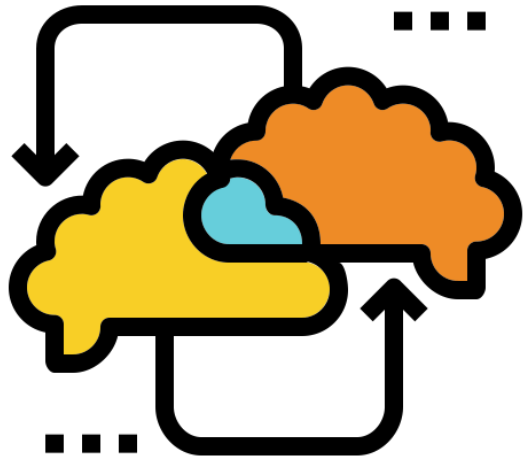
	Wyoming K-12	National K-12
2018-2019	25.5%	6.4%
2019-2020	27.8%	16.6%

IDEA Section 618 Data, ww2.ed.gov



Teamwork

Brilliant!



- Decisions are made by teams.
- Teams share input.
- Teams share responsibility.
- Be that team leader!



If you haven't included the parents in decision-making, the more likely they are to dispute your decision.



Parent Participation

- It has NEVER been more important than NOW to communicate with parents.
- Special education has experienced unprecedented times.
- Lack of communication builds mistrust.
- Mistrust breeds disagreement.



Parent Participation



DON'T

DON'T exclude parents from the decision-making process.



DON'T

DON'T make unilateral changes to IEP services.

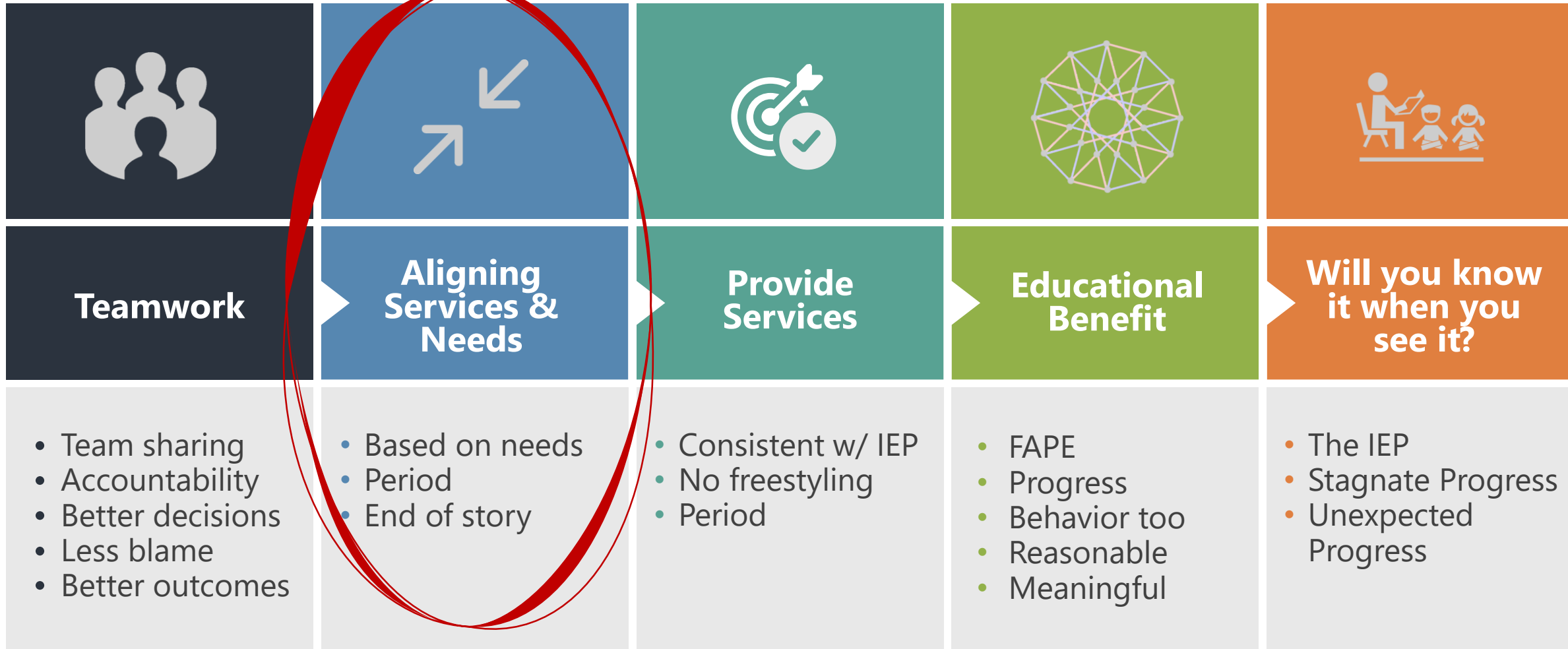


DON'T

DON'T underestimate the importance of PWN.



TODAY'S TOPICS



FAPE is *still* FAPE

- Neither Congress or the USDE have authorized a departure from the long-established FAPE standards during the pandemic.
- IEP teams must go through the same steps to propose an IEP based on a student's unique educational needs.





Secretary of Education Report to Congress

April 27, 2020



The Department is not requesting waiver authority for any of the core tenets of **IDEA** or Section 504, most notably **FAPE in the LRE.**





**Letter to
Special
Education
and Early
Intervention
Partners,
August 24, 2021**



OSERS made clear that, for the 2020-2021 school year, no IDEA requirements were waived.





Letter to Special Education and Early Intervention Partners, August 24, 2021



OSERS further clarified that, no matter what primary instructional delivery approach was chosen for that year, SEAs and LEAs remained responsible for ensuring that FAPE was available to all children with disabilities.





Letter to Special Education and Early Intervention Partners, August 24, 2021

“

OSERS wants to reiterate and emphasize that children with disabilities retain their rights to receive appropriate services under IDEA.

This includes ensuring that IEPs are in effect for children with disabilities at the start of the upcoming school year, and all other rights under IDEA Part B are protected.



WHY KEEP THE TEAM'S FOCUS ON EDUCATIONAL BENEFIT?

● ● ● ●
It is the law!



01

THE RESPONSIBILITY TO PROPOSE

School districts have the legal responsibility to propose FAPE, which means an IEP reasonably calculated to provide educational benefit in light of a student's unique circumstance.

02

THE RIGHT TO RECEIVE

Students have the right to receive FAPE, which translates to educational benefit. Parents have the right to litigate a denial of FAPE.

03

STILL NO GUARANTEE OF SUCCESS

Despite the reciprocal responsibility and right, there is not guarantee of success. Lack of educational benefit means the IEP team has more work to do.



The FAPE Standard

The student's educational program must be **appropriately ambitious in light of his unique circumstances**, just as advancement from grade to grade is appropriately ambitious for most children in the regular classroom.

Endrew F. v. Douglas County Sch. Dist. RE-1, (U.S. 2017).



The FAPE Standard

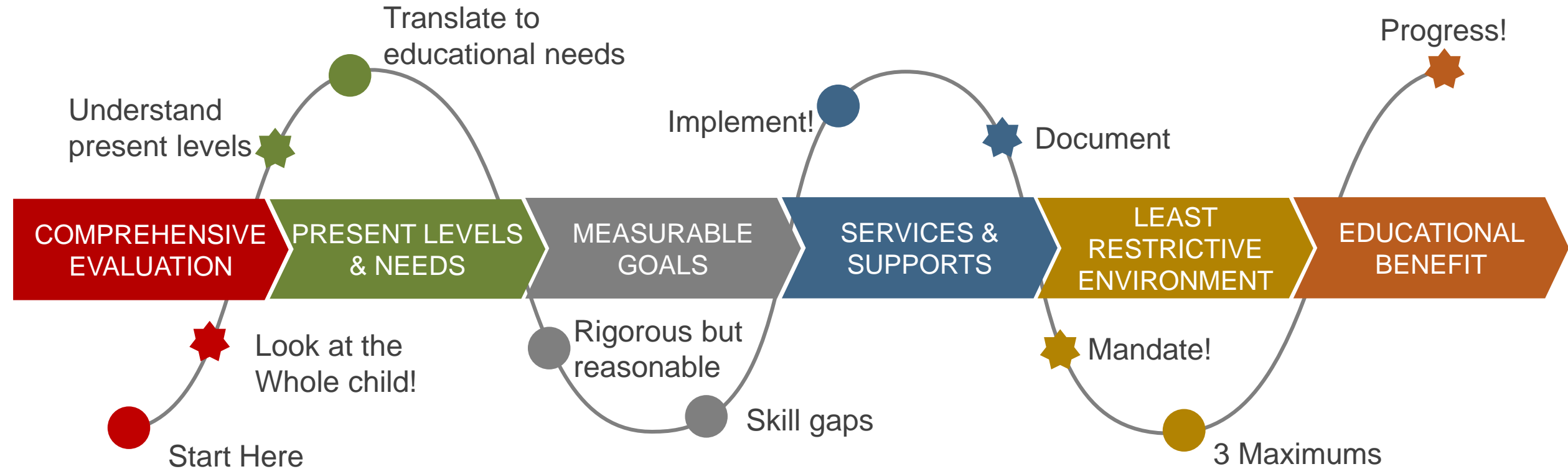
The student's educational program must be **reasonably calculated for the child to receive educational benefit.**

Bd. Of Educ. Of the Hendrick Hudson Central Sch. Dist. v. Rowley, 553 IDELR 656 (U.S. 1982).

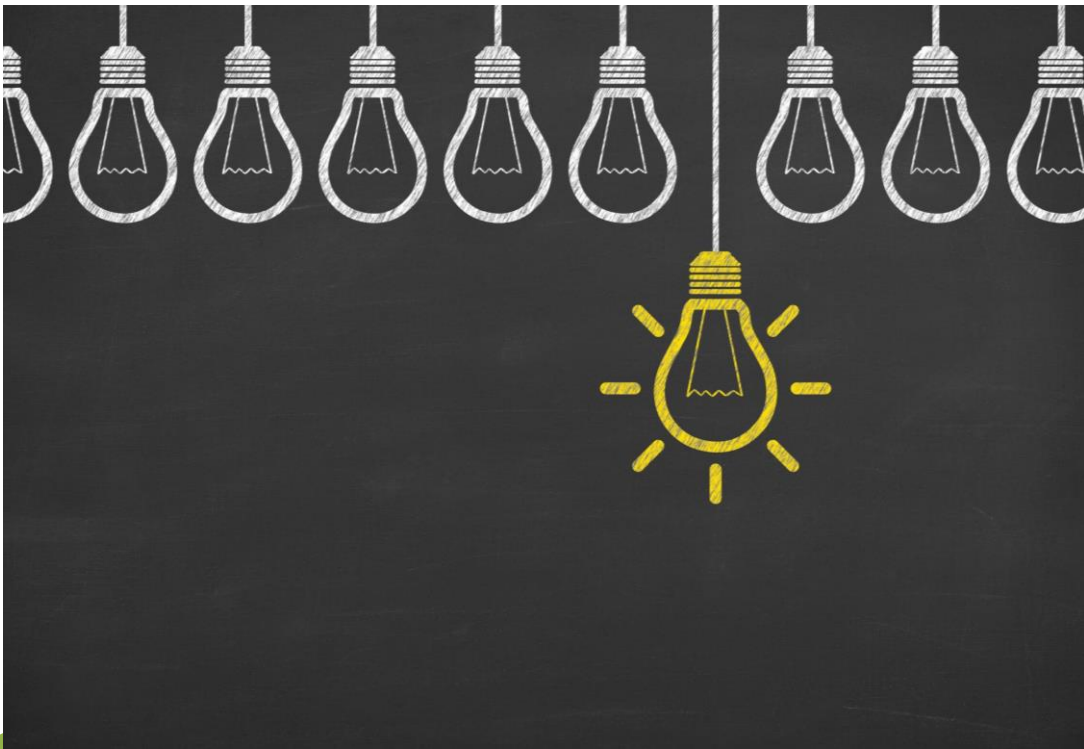


The FAPE Continuum

The Starting Point



It starts with a comprehensive evaluation.



An evaluation under the IDEA serves two purposes:

- Identifying students who need specialized instruction and related services because of an IDEA-eligible disability; **and**
- Helping IEP teams identify the special education and related services the student requires.

71 Federal Register 46548.



Evaluation Wheel



IDEA's Comprehensive Evaluation

Comprehensive
Evaluation
=

IDEA Disability

and

Educational
Needs





**THE
TARGET**

DON'T WAIT TOO LONG.

- A mature child find obligation:
 - Suspect an IDEA disability, AND
 - The need for specially designed instruction.



Hood River County Sch. Dist. v. Student,

79 IDELR 40 (D. Oregon 2021).

- An Oregon district's failure to credibly explain why it waited nearly two years to evaluate a child was responsible for a substantial compensatory education award. Concluding that the district violated the IDEA's child find mandate and denied the child FAPE, the Court ordered the district to provide the child 900 hours of compensatory education.
- After reviewing a private October 2016 evaluation report that included a diagnosis of autism, the district advised the parents to postpone an IDEA evaluation until the child entered kindergarten.
- Under the law, a district must evaluate a child it suspects has a disability that necessitates special education services. This district had long standing concerns regarding sensory processing and communication and had served the student on an IFSP.



D.C. v. Klein Indep. Sch. Dist.,

79 IDELR 4 (5th Cir. 2021).

- A Texas district unreasonably delayed evaluating an elementary school student who struggled with reading comprehension and failed to develop an adequate IEP for the student.
- If a student has a 504 plan addressing an academic deficit but fails to progress for several months despite accommodations, that's a signal the child may need specialized instruction. Unlike this district, which waited several months after it knew the child's reading comprehension wasn't improving, districts in such situations should move quickly to evaluate, or, if they determine an evaluation is unnecessary, fully document their reasoning in a procedural safeguards notice to the parents.
- The delay was unreasonable and denied the student FAPE.



EVALUATE THE WHOLE CHILD!

- Look at the whole child and ask:
 - Do we have any unanswered questions about the student's ability or performance across ALL environments?
 - What data must be collected in order to answer these questions?



Minnetonka Pub. Schs., Indep. Sch. Dist. No. 276, 78 IDELR 94 (D. Min. 2021).

- Regardless of how a district classifies an IDEA-eligible student's disabilities, it must ensure that it identifies and addresses all of the student's disability-related needs.
- This means the district must evaluate the student in all suspected areas of disability, develop appropriate goals, and revise the IEP as needed to address the student's lack of progress.
- Although this student's evaluations revealed his ongoing struggles with reading, the district repeatedly developed IEPs that focused primarily on the student's needs as a child with autism.



Minnetonka Pub. Schs., Indep. Sch. Dist. No. 276, 78 IDELR 94 (D. Min. 2021).

- That oversight, along with the repetition of the student's annual goals, showed the student was not making adequate progress.
- The court ordered the district to reimburse the parents for the student's private reading program and the cost of an independent educational evaluation.



S.S. v. Bd. Of Educ. Of Harford County,

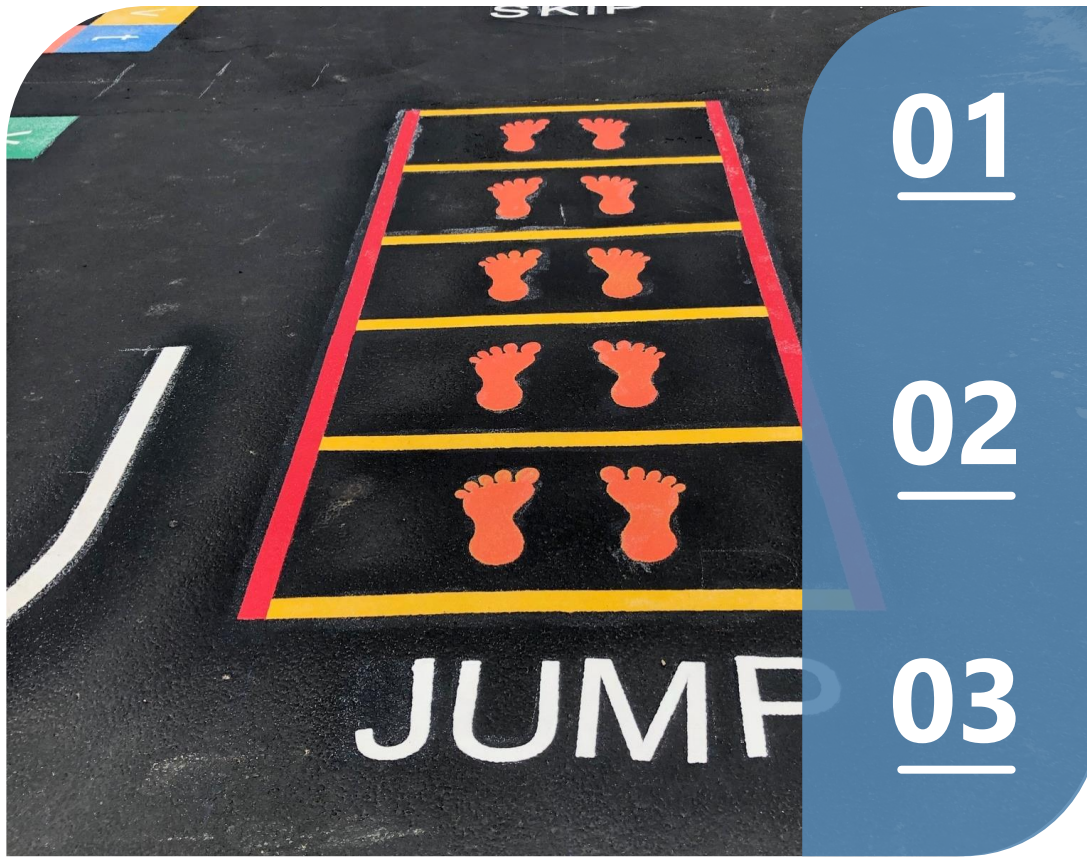
77 IDELR 182 (D. Md. 2020).

- A Maryland district denied FAPE to an elementary school student with autism and other disabilities not only by failing to conduct a functional behavioral assessment in a timely manner, but also by developing an IEP that failed to address her interfering behaviors.
- Regardless of whether a district conducts an FBA of an IDEA-eligible student, it must ensure that the student's behavioral intervention plan or IEP adequately addresses her behaviors.
- A district that offers inadequate or ineffective behavioral interventions significantly increases its chances of being found liable for a denial of FAPE. Not only did the district in this case wait six months to conduct an FBA, but the interventions it eventually offered had no meaningful impact on the child's behavior.



PRESENT LEVELS

More than just test scores!



ACADEMIC AND FUNCTIONAL

Explain present levels of academic achievement and functional performance. What skills does the student currently have?

.....

ACROSS ENVIRONMENTS

How does the student perform throughout the school day?

.....

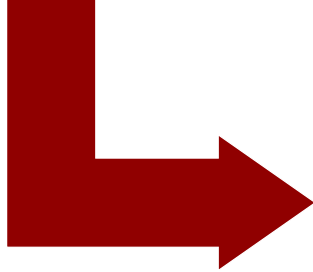
THE GENERAL CURRICULUM

How does the student's disability affect his/her involvement in the general curriculum?



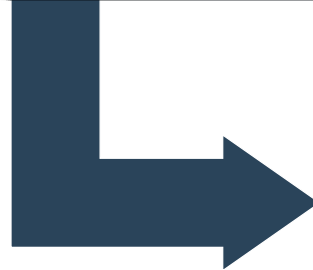
PLAAFP

- Compared to the general curriculum



Skill Gaps

- Compared to standards



IEP Goals

- Unique for every student



Goals are linked to skill gaps.

Annual measurable goals must be:

Based on the unique needs of a student.

Designed to help the student be successful in the general curriculum.

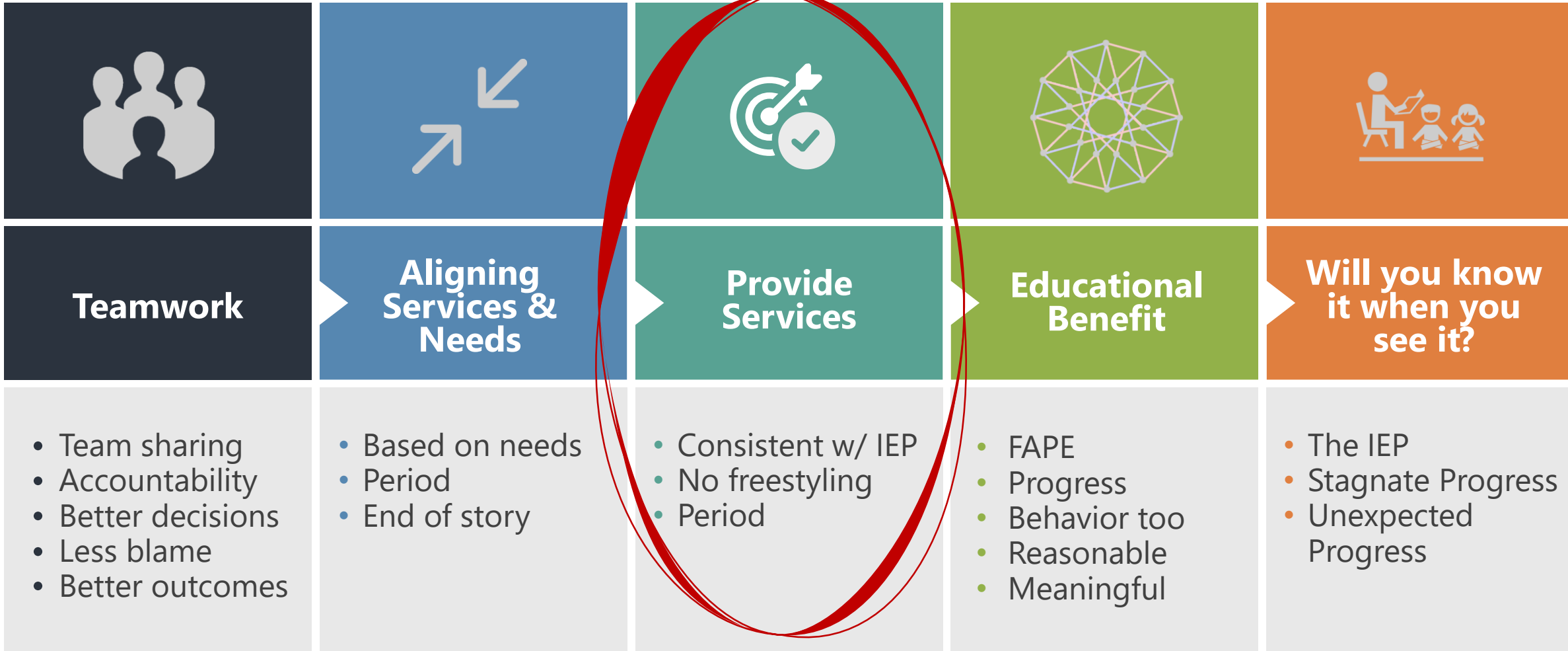


34 C.F.R. §300.320(a).



RIGOROUS BUT REASONABLE!

TODAY'S TOPICS



**Remember,
FAPE is
aligned
with the
general
curriculum.**

- 34 C.F.R. §300.39(b)(3)
- Specially designed instruction means adapting as appropriate to the needs of an eligible child the content, methodology, or delivery of instruction –
- To address the unique needs of a child that result from the disability, and
- **To ensure access of the child to the general curriculum**, so that the child can meet the educational standards that apply to all children.



More points of alignment.

The IEP must include a statement of how the child's disability affects the child's **involvement and progress in the general curriculum**. *34 C.F.R. §300.320(a)*.

The IEP must include a description of special education and related services to enable the child to be **involved in and make progress in the general curriculum**. *34 C.F.R. §300.320(a)*.

The clear implication is that there is an **education curriculum that is applicable to all children** and that this curriculum is based on the state's academic content standards. *71 Federal Register 46579*.



Related Services

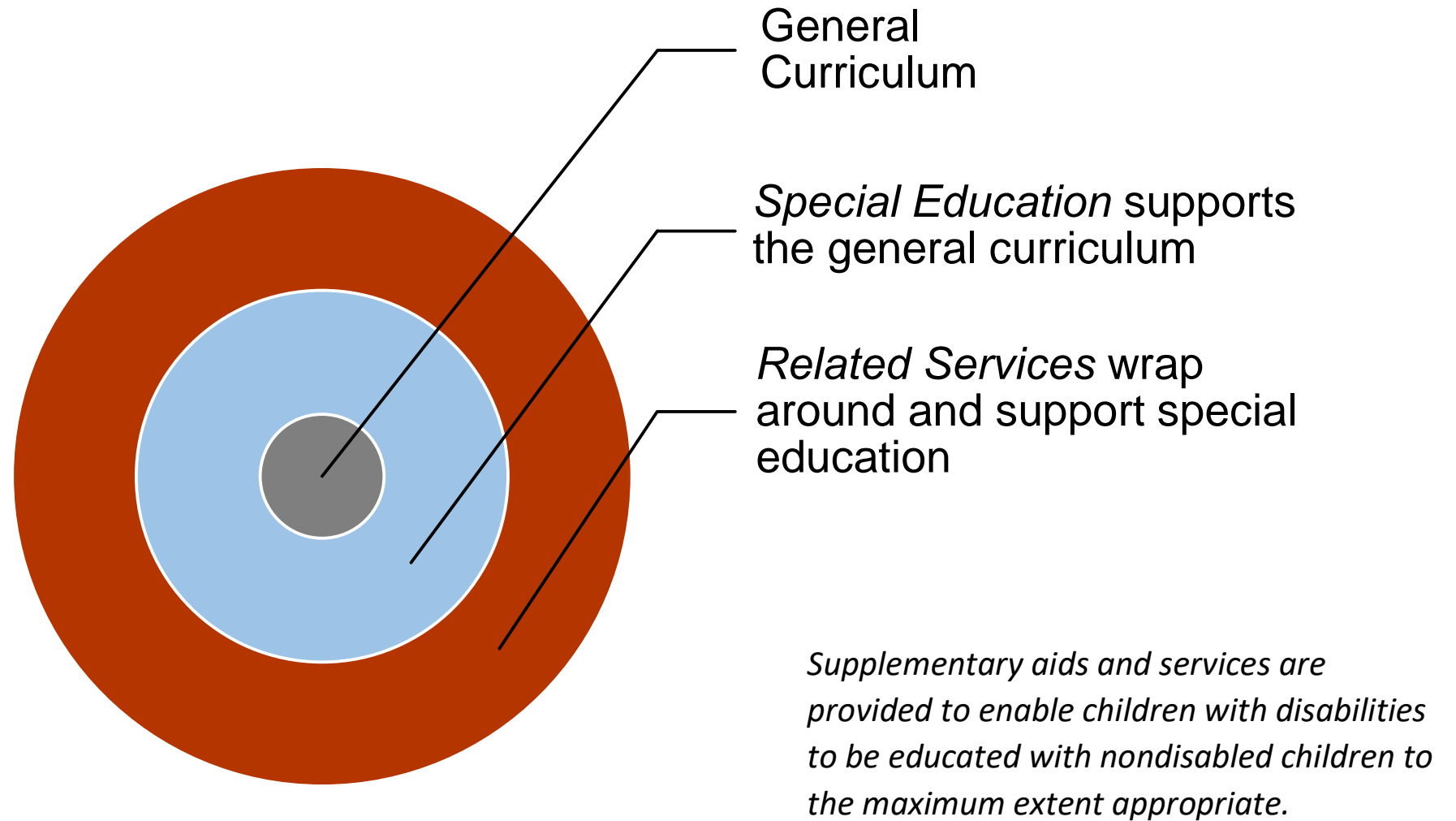
Related Services may also be an important component of FAPE for some students.

Related Services are required when necessary to help a student benefit from their special education.

34 C.F.R. §300.34.



SERVICES



ASK...

- If Speech/Language service is provided as special education, how does the service help the student to make progress in the general curriculum?
- If Speech/Language service is provided as a related service, how does the service help the student to benefit from his/her specially designed instruction?



next

Design and provide services

TO HELP STUDENTS MEET IEP GOALS!



**Once determined by the
team,**

**SERVICES MUST BE PROVIDED IN ACCORDANCE WITH
THE IEP!**



LEAST RESTRICTIVE ENVIRONMENT

The 3 maximums!



EDUCATED WITH NONDISABLED

To the maximum extent appropriate, students with disabilities are educated with nondisabled children. *34 C.F.R. §300.114.*

EXTRACURRICULARS

To the maximum extent appropriate, ensure participation with nondisabled children in extracurricular activities. *34*

C.F.R. §300.117.

SUPPLEMENTARY AIDS & SERVICES

To the maximum extent appropriate, supplementary aids and services are provided to educate students with nondisabled peers. *34 C.F.R. §300.42.*



LEAST RESTRICTIVE ENVIRONMENT



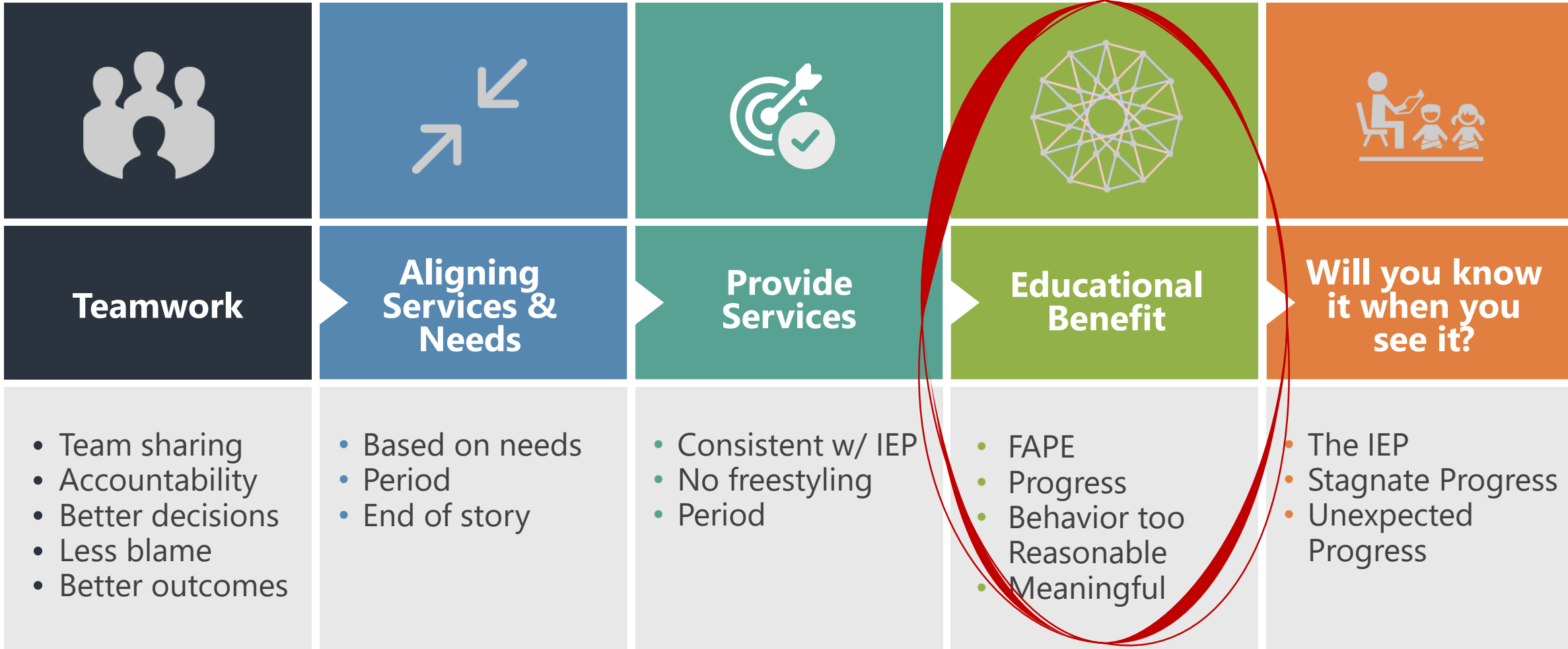
Montgomery County Intermediate Unit No. 23 v. K.S.,

79 IDELR 5 (E.D. Pa. 2021).

- An intermediate educational unit had to reimburse the parents of a 3-year-old boy with autism for the tuition and transportation costs they incurred when they placed their son in a general education preschool.
- Local educational agencies should not interpret their state's lack of a universal preschool program to mean they never have to fund general education preschool placements for children with disabilities.
- If a child needs such a placement to receive FAPE, the LEA may have to provide it at no cost to the parents.
- In this case, the IEU argued that it did not have to pay for a general education preschool placement unless the state made preschool-level instruction available to all children. Its misinterpretation of the IDEA and the state's special education code resulted in months of costly litigation.



TODAY'S TOPICS



What is a reasonable amount of progress?



Rigorous

Targeted.
Challenging.
Unique.

Reasonable

Growth.
Over time.
Demonstrable.



Look at the whole child!

- **PROGRESS SHOULD BE MONITORED AND REPORTED IN ALL AREAS OF NEED.**
- **ACADEMIC, SOCIAL, BEHAVIOR, FUNCTIONAL...**



What is a reasonable amount of progress?

The team already determined a reasonable progress amount.

- **Rigorous.** Challenging. Targeted. Unique.
- **Reasonable.** *How much of the skill gap can we expect to close?*



Preciado v. Bd. Of Educ. Of Clovis Mun. Schs.,

76 IDELR 67 (D.N.M. 2020).

- A New Mexico district denied FAPE to an elementary school student with a specific learning disability not only by developing inadequate IEPs, but also by failing to ensure she received appropriate instruction in reading and writing.
- If an IEP team has information suggesting that a student with a disability is not progressing as anticipated, it should consider the need for different or additional services.
- A district that continues a student's current level of services despite her lack of progress may very well find itself defending a FAPE claim. Although the student in this case repeatedly failed to meet her reading and writing goals, her IEP team offered substantially the same program for three years in a row.



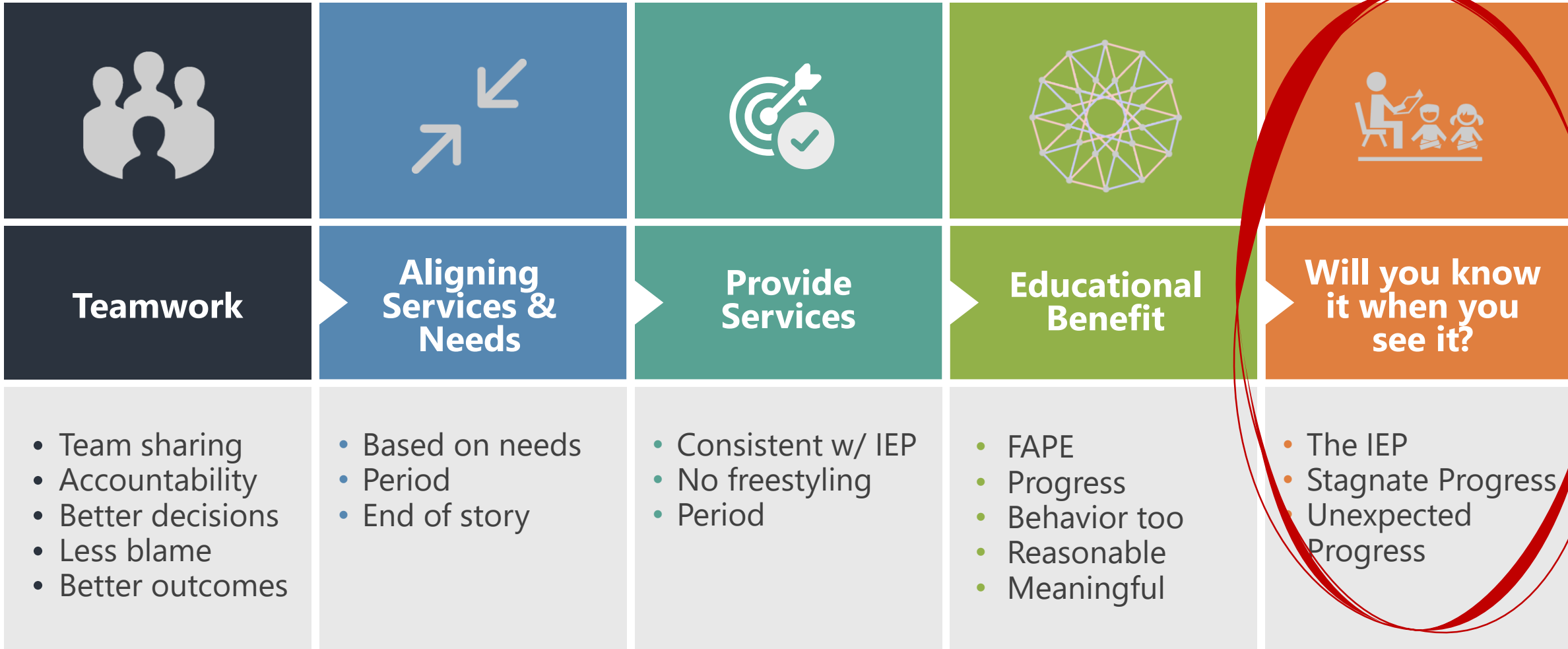
Preciado v. Bd. Of Educ. Of Clovis Mun. Schs.,

76 IDELR 67 (D.N.M. 2020).

- Not only did the student's third-, fourth-, and fifth-grade IEPs have "extremely similar goals and recommendations," but the evidence showed that she did not receive adequate instruction in reading and writing.
- The judge attributed some of the student's struggles to her special education teacher's lack of familiarity with the Orton-Gillingham approach to reading instruction. "[The teacher] believed that simple repetition of words taught a student how to read," the magistrate judge wrote, noting that the teacher conflated memorization with decoding.



TODAY'S TOPICS





How will you know if its working?

Progress monitoring.

- **Data.** Collect and share data at a high frequency.
- Monitor **progress** toward IEP goals and **progress** in the general curriculum.
- Stay vigilant and communicate with parents.





**LACK OF
PROGRESS**





What happens if a student makes no/little progress?

The 4 Rs

- **Who?** The team.
- **When?** A reasonable amount of time.
- **Why?** If the IEP is not recalibrated, a denial of FAPE will result.



RECONVENE
REVIEW
RESTRATEGIZ
E
REVISE





**UNEXPECTED
PROGRESS**





What happens if unexpected progress occurs?

The 4 Rs

- **Who?** The team.
- **When?** A reasonable amount of time.
- **Why?** If the IEP is not recalibrated, a denial of FAPE will result.



If educational needs change, it is time to realign the IEP to address new educational needs in order to provide access and an opportunity to progress in the general curriculum.



RECONVENE
REVIEW
RESTRATEGIZ
E
REVISE



RECONVENE

Get the IEP team together!

- **Virtually, telephonically, or at the same table.**
 - Ask what additional information is needed to fully understand the student's current educational needs.
 - Develop a plan to gather information or conduct assessments.
 - Set a time to review the new information.



Evaluation

Present
Levels &
Needs

Measurable
Goals

Services and
Supports

**REVIEW
TO FIND THE
BROKEN LINK!**

Least
Restrictive
Environment

Educational
Environment

REVIEW

Review all information collected.
PROBE!

The goal: A clear understanding of the student's current functioning.

Have the present levels changed?

Were the goals rigorous & reasonable?

Were services provided consistent with the IEP?



RESTRATEGIZE

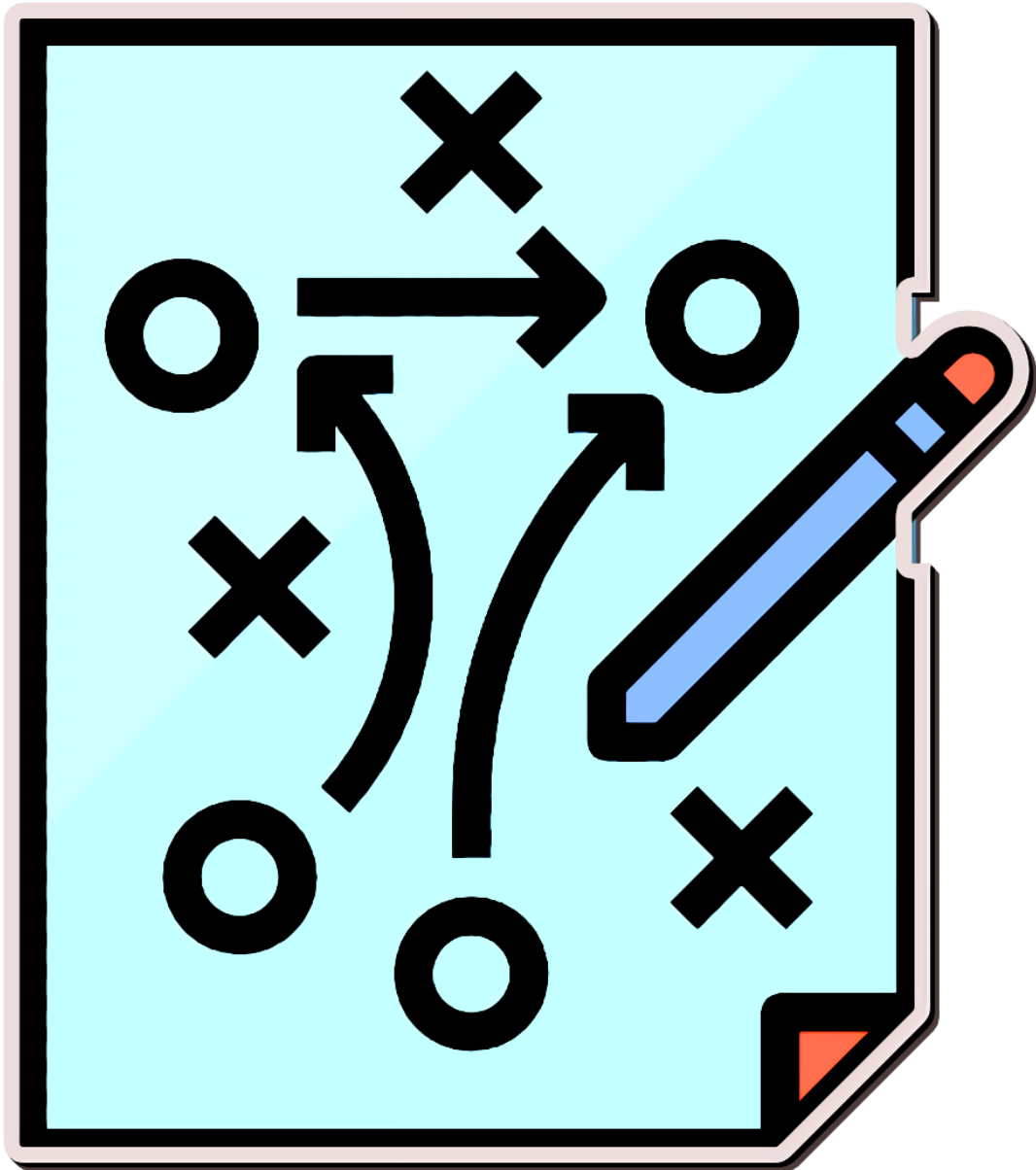
- **What services and supports does the student need to meet the goals?**
- **34 C.F.R. §300.320(a)(4)**
 - A statement of the special education and related services and supplementary aids and services to be provided to the child, or on behalf of the child, and a statement of the program modifications or supports for school personnel that will be provided to enable the child—



RESTRATEGIZE

- **34 C.F.R. §300.320(a)(4)**
 - To advance appropriately toward attaining the annual goals;
 - To be involved in and make progress in the general education curriculum in accordance with paragraph (a)(1) of this section, and to participate in extracurricular and other nonacademic activities; AND
 - To be educated and participate with other children with disabilities and nondisabled children in the activities described in this section.





RESTRATEGIZE

- Ask what is the least restrictive environment where the student can be successful.
- Understand the difference between placement and location.

REVISE

- NOW, revise the IEP to meet the student's current needs.
 - ✓ Annual IEP or an amendment.
 - ✓ Provide services and supports in conformity with the IEP.
 - ✓ Collect and report frequent progress data.
 - ✓ If the student is NOT receiving the anticipated educational benefit, or if the student makes UNANTICIPATED progress, GO BACK TO THE 4 Rs.



WHY ARE THESE STEPS IMPORTANT?

Because we work on behalf of children.
If that doesn't convince you, maybe this will. . .



Downingtown Area Sch. Dist. v. G.W.,

77 IDELR 155 (E.D. Pa. 2020).

- A Pennsylvania district denied FAPE to a student with autism and a speech language impairment from February 2017 to the end of the school year, and during the 2018-19 school year by failing to address the student's lack of progress and by failing to timely conduct needed evaluations.
- When an IEP team repeats goals from one IEP to another, that's a red flag that the student may not be progressing appropriately.
- For each goal that is repeated, the IEP team should consider whether the student requires additional or different services to improve. Otherwise, a court may find, as occurred here, that the IEP wasn't designed to enable the student to make progress. This team should have either changed the five goals it repeated; adjusted the student's programming to reverse his stagnation, or both.



McLaughlan v. Torrance Unified Sch. Dist.,

79 IDELR 75 (C.D. Cal. 2021).

- It may sometimes be difficult to develop an appropriate educational program for a student, especially if he requires intensive services to address his deficits and behaviors.
- In those circumstances, the district should promptly modify the IEP if it's clear that the program isn't meeting the student's needs.
- Because this student became easily overstimulated in group settings, he could not tolerate the 314 minutes per day of group instruction required by his IEP.
- To ensure the student received FAPE, the district should have immediately considered whether a 1:1 setting was appropriate and properly revised the IEP to reflect his new placement.



Evaluation

Present
Levels &
Needs

Measurable
Goals

**REMEMBER, IT IS THE
TEAM'S
RESPONSIBILITY TO
FIND THE BROKEN
LINK!**

Doe v. Huntsville City Schs. Bd. Of Educ.,

78 IDELR 94 (D. Min. 2021).

- The parent of an 8-year-old student with Asperger syndrome and Charcot-Marie-Tooth syndrome established a viable claim that a district and several educators violated her son's 14th Amendment substantive due process rights by failing to intervene in the peer bullying the student allegedly experienced at school.
- Districts should ensure their staff know that having a bullying victim with a disability meet with the individual who is bullying him is nearly always an improper response.
- Proper training could have prevented this assistant principal from having the child, who had sustained permanent physical injuries, meet with the bully, who used the opportunity to assert even more power over the victim.







Thank You

LenoreK@PingoraConsulting.com